

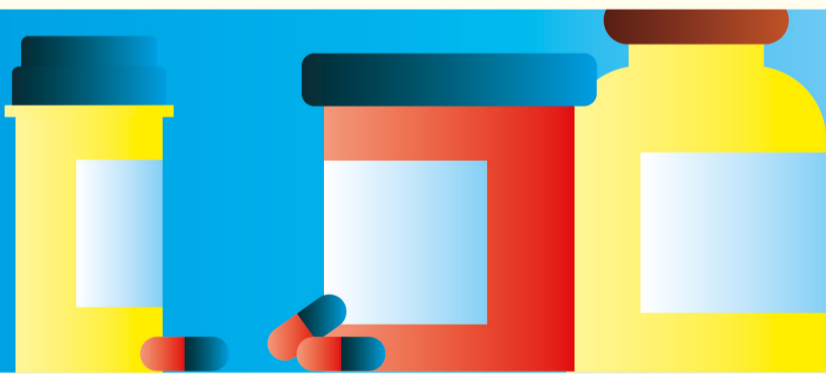
MEET EMILY BRANDISH **TRAINEE NURSING ASSOCIATE** AT OXFORD UNIVERSITY HOSPITALS

Showing kindness and having patience are really important in this job.

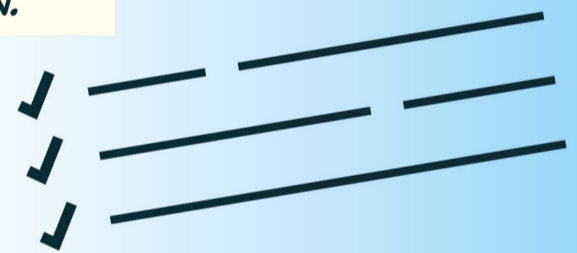


My experiences with hospitals plus a desire to help people led me towards a career in healthcare.

Sharing a patient load with a nurse, I do everything from assisting with feeding and personal care, to receiving post-operative patients, to changing different wounds/dressings and preparing medications.



MY WORK IS VERY HANDS-ON.



The biggest challenge is juggling the nursing tasks. This means long shifts, keeping on top of my work and trying to not absorb the stress that can come with the job.

The best part of my job is interacting with patients: making them feel they are more than just a wristband, and comforting them when they feel scared or vulnerable.



PREVIOUS CAREER AS A BARBER

HOW EMILY GOT HERE.

GAINED MATHS AND ENGLISH QUALIFICATIONS

SECURED A PLACE ON A TRAINEE NURSING ASSOCIATE COURSE

STUDIED A LEVEL 5 APPRENTICESHIP AND FOUNDATION DEGREE IN SOCIAL SCIENCES

**FIND OUT MORE AT
WWW.STEPINTOTHENHS.NHS.UK**

