

OxLEP Skills: Picks of the Week

[View this email in your browser](#)

Oxfordshire
CAREERS HUB

THE CAREERS &
ENTERPRISE
COMPANY

Picks of the Week: LMI Special

This Labour Market Information (LMI) Picks of the Week special is packed with resources for you to share with your students, parents/carers and colleagues to help raise awareness of the fabulous job and career opportunities here on our doorstep in Oxfordshire.



Oxfordshire Careers Hub Resources

www.oxfordshirelep.com/careershubschoolsresources

Oxfordshire has a diverse and innovative labour market, which includes sectors such as space, life sciences and the creative sector, as well as construction and the visitor economy. An important part of a progressive careers programme is that students are aware of the local opportunities, to help them make the right choices about their best next steps. Oxfordshire Careers Hub has been working with local employers and others to create new resources to help you to bring the Oxfordshire labour market to life for your students. The information in this newsletter can also be accessed via the link above.

* NEW * Labour Market Information Posters

Labour Market Information (LMI) should be accessible to all students and should spark their interest and generate discussion about key sectors and where future opportunities will be. Through Oxfordshire Careers Hub funding, we have created a number of posters to support students to learn more about the labour market in Oxfordshire, with a focus on some of our key sectors. We'd love to hear your ideas about different ways to use them, but as a starter you could share them with your colleagues and parents/carers and publish them on your school's website.

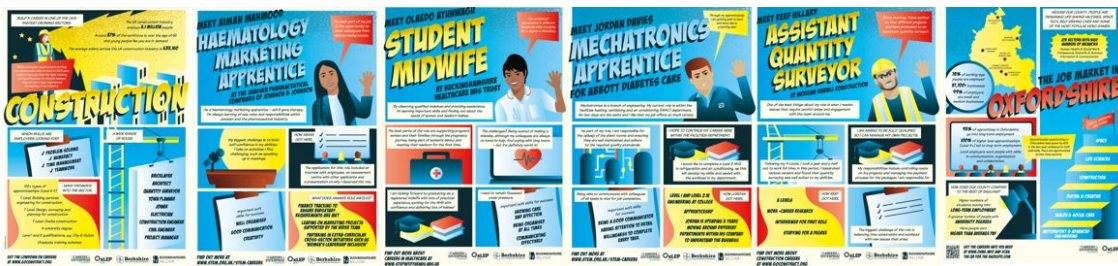
- [Employment in the UK](#)
- [The job market in Oxfordshire](#)
- [The application process](#)

Subscribe	Past Issues	Translate ▼
------------------	--------------------	--------------------

- [Construction](#)
- [Construction in depth](#)
- [Creative](#)
- [Creative in depth](#)
- [Digital tech](#)
- [Digital tech in depth](#)
- [Health and social care](#)
- [Health and social care in depth](#)
- [Life sciences](#)
- [Life sciences in depth](#)

Job profiles:

- [Aiman Mahmood - Haematology Marketing Apprentice at Johnson & Johnson](#)
- [Ben Willsmore - Network Planning Engineer at Scottish & Southern Electricity Networks](#)
- [Cameron Smith - Senior Technician at Reading Scientific Services](#)
- [Daisy Golledge - Film Officer Apprentice at Resource Productions](#)
- [Dan Hind - Programmer at Rebellion](#)
- [Emilia Reyes Pabon - Technician Scientist at the University of Oxford](#)
- [Emily Brandish - Trainee Nursing Associate at Oxford University Hospitals](#)
- [Holly Kellaway - Nutritionals Marketing Apprentice at Bayer UK](#)
- [Jordan Davies - Mechatronics Apprentice at Abbott Diabetes Care](#)
- [Lily Hudson - Film Officer Manager at Resource Productions](#)
- [Olaedo Atunwagu - Student Midwife at Buckinghamshire Healthcare NHS Trust](#)
- [Ollie Graham - Junior Propellant Chemist at European Astrotech](#)
- [Rebecca Sammons - Project Coordinator at Pinewood Studios](#)
- [Reef Hillary - Assistant Quantity Surveyor at Morgan Sindall](#)



* NEW * What's in a Building? Construction WOW Show Special

<https://youtu.be/R1vyMQXvbi4>

Harwell Science and Innovation Campus in Didcot have funded a fantastic WOW Show Special that unearths some of more unknown roles in construction, as well as shining a light on some of those we see every day. This was filmed in Oxfordshire and brings to life all the people and skills that are needed to get

current construction projects happening across Oxfordshire.



The film features people talking about their jobs in construction with Oxfordshire employers.

* NEW * OxLEP Local Skills Dashboard

<https://insight.oxfordshire.gov.uk/cms/local-skills>

The latest Labour Market Information for Oxfordshire can be found via the OxLEP Local Skills Dashboard. We're updating the dashboard regularly to ensure it reflects the available data as it is released. We would love to hear your feedback on the tool and the different ways you plan to use it. For example, perhaps your Maths or Geography departments could use some of the data in a lesson.

Welcome to the Oxfordshire Local Skills Dashboard

People need labour market information such as workforce trends, skill requirements and job vacancies to help them make informed education, training or career decisions.

This dashboard has been developed in partnership with OxLEP and Oxfordshire County Council to provide key information on Oxfordshire's labour market and skills landscape, accompanying the: [OxLEP Local Skills Report and Plan](#).

How to Use

Use the navigation bar to navigate between the main themed pages on this dashboard. In each main theme there are also a number of sub themes which can be navigated to through the sub-menu.

Technical and Economic Development Users

The information can also support a variety of users to identify how the economy of Oxfordshire functions in terms of labour supply and demand, through the prepared charts and by exploring and formulating the full data sets directly.

Contact

skills@oxfordshirelep.com

About Oxfordshire

In 2022, Oxfordshire was home to over 725,000 people (Census 2021), with more than 34,500 active trading companies. It contains five local authority districts: Cherwell, Oxford, South Oxfordshire, Vale of White Horse and West Oxfordshire. These have key urban centres (cities and towns), such as Oxford City, Banbury and Didcot, as well as significant areas of rural (countryside) landscape.

Oxfordshire sits in a strategic (important), well-connected location in the UK. It has strong transport links in the Bristol-Birmingham-London triangle and is an essential part of the UK's Golden Triangle (London, Cambridge and Oxford) for research and innovation.

Oxfordshire is one of the strongest economies in the UK with the ability to recover and adapt quickly. It is benefitted by some of the best research organisations in the world, alongside pioneering, ground-breaking businesses.

There is also a strong visitor economy historically based around Oxford, Blenheim Palace and Bicester Shopping Village.



* Update * Find Your Future

<https://the360expo.com/find-your-future>

There are a number of new employers on our Find Your Future virtual careers platform including Arrival, Oxford Bus Company, Oxford United Football Club, DHL, Modus Accountants and Justice in Motion. Please encourage your students and their parents/carers to visit and have a look around!

* COMING SOON * Available in January 2023

We have some exciting new resources coming to you in the New Year and will let you know once these are available:

Curriculum resources

Over the last 6 months we have worked with various Oxfordshire employers, including Rebellion, Prodrive and Unipart, to develop curriculum resources to support different subjects. We will be sharing the first of these in the New Year and will be continuing to work with more employers to expand this library of resources for your teachers to use.

Subscribe

Past Issues

Translate ▼



LMI Platform for Young People with SEND

Your Future Oxfordshire will be a fabulous tool for students to use. It is a clear and visual platform for students to look at various job sectors, in a way that will help them understand the Oxfordshire labour market and the jobs available. This tool is fully accessible and has been developed for young people with SEND as its main audience, but can be used to support other students understanding of the labour market too.



Existing Resources

Please remember that the below resources are still available:

Your Fabulous Future in Oxfordshire Film

<https://youtu.be/i5FcJAfeXWc>

This WOW Show careers special will inform and inspire your students' career choices and help them to find out about all the amazing career opportunities on their doorstep here in Oxfordshire.



Students can find out about the jobs and careers available on their doorstep in this short film.

Labour Market Information Lesson Resources

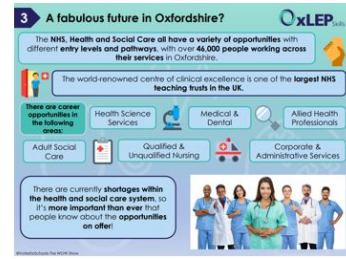
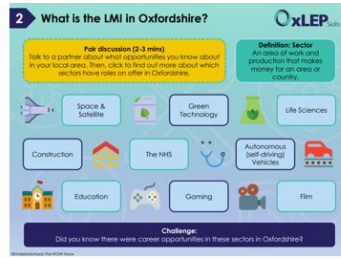
The following Labour Market Information lesson resources have been developed in association with VotesforSchools and The WOW Show. There is a lesson resource and lesson plan for each year group which can be used in the classroom, as well as a general lesson on LMI which can you be used with a variety of audiences. If you are a school/college in the Oxfordshire Careers Hub and would like a PowerPoint version of the resources, please contact your Enterprise Coordinator.

- [General LMI lesson](#)
- [Year 7 LMI lesson](#)
- [Year 7 LMI lesson plan](#)
- [Year 8 LMI lesson](#)
- [Year 8 LMI lesson plan](#)
- [Year 9 LMI lesson](#)
- [Year 9 LMI lesson plan](#)
- [Year 10 LMI lesson](#)
- [Year 10 LMI lesson plan](#)
- [Year 11 LMI lesson](#)
- [Year 11 LMI lesson plan](#)
- [Key Stage 5 LMI lesson](#)
- [Key Stage 5 LMI lesson plan](#)
- [SEND LMI lesson black on white](#)
- [SEND LMI lesson white on black](#)

[Subscribe](#)

[Past Issues](#)

[Translate](#) ▼



For more information on any of the articles in this update, please contact us at: skills@oxfordshirelep.com

[Forward this email to a friend](#)

Has this email been forwarded to you? Would you like to subscribe to receive this update each week?

[Click here](#) to sign up.



OxLEP Ltd, HQ Building, Thomson Avenue, Harwell Campus, OX11 0GD
Copyright © 2022 Oxfordshire Local Enterprise Partnership, All rights reserved.

OxLEP is committed to ensuring that your privacy is protected. AT ANY TIME, YOU HAVE THE RIGHT TO WITHDRAW YOUR CONSENT ALLOWING US TO CONTACT YOU.

[Please review our privacy policy.](#)

You can do this by emailing us via: skills@oxfordshirelep.com. Please ensure the email is entitled: 'Please do not contact me'.

Our mailing address is: skills@oxfordshirelep.com

[unsubscribe from this list](#) [update subscription preferences](#)

This email was sent to <<Email Address>>

[why did I get this?](#) [unsubscribe from this list](#) [update subscription preferences](#)

OXFORDSHIRE LOCAL ENTERPRISE PARTNERSHIP · HQ Building, Thomson Avenue · Harwell Campus · D IDCOT, OXON OX11 0GD · United Kingdom